

2023 CONTRIBUTIONS - GROUP

Published in June 2024



“In 2023, we have maintained our commitment to promoting a positive and sustainable impact in the areas where our production and research sites are located. These contributions reflect our commitment to strengthening local economies and improving the quality of life in our communities. We are determined to build on this momentum in line with our ambition to process mineral resources responsibly, and to become a benchmark CSR player in the mining sector.”

Virginie de Chassey,
Director of Sustainable Development and Corporate Engagement



€3.1bn
of economic
contribution in 2023



EMPLOYMENT

19,940 direct jobs*

In Gabon, Senegal, New Caledonia, Indonesia, Argentina, Norway, France, the United States and Cameroon

1,141 interns and students
hosted in 2023

* Direct jobs represent subsidiaries and permanent subcontractors on site



COMMUNITIES

€8.7M

of community investment

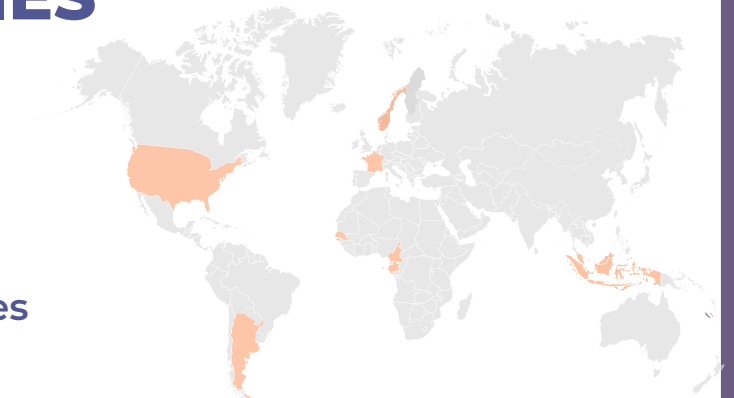
267,591 beneficiaries
at the global level



33,060 people had
access to vocational training



874 people received
help in the entrepreneurial
sector



5,630 people had access
to scholarships and better
educational conditions



225,741 people
benefited from improved
infrastructure

Eramet is present in Senegal through its subsidiary GCO, whose activities are located on the western coast of Senegal, in the coastal dunes of the Niayes area. The mining concession is located 150km from Dakar and covers an area of 445 km² between the regions of Thiès and Louga. It covers an area from the south of the village of Fass Boye to the north of the village of Lompoul, crossing the 4 towns of Darou Khoudoss, Kab Gaye, Diokoul Diawrigne and Thieppe. There are approximately 60 villages in the vicinity of GCO's activities.

€25M
Taxes, dividends, etc.

€34M
Payroll

€90M
Purchases and subcontracting in the country

€400k
Community investment spending



€149M
of economic
contribution in
Senegal in 2023



EMPLOYMENT

1,847 direct jobs*
in Senegal

68% of nationals

17 interns and students
hosted at GCO

Approximately **50%** of hires
came from the local employment area

* Direct jobs represent the workforce of subsidiaries and permanent on-site subcontractors.



COMMUNITIES

€400k

of community investment



7 new MSEs financed, with over **2,000**
women involved in agricultural and fisheries
products



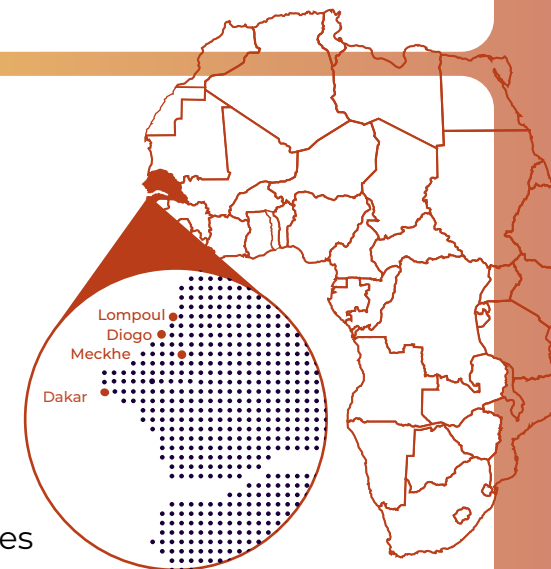
Construction and inauguration of the Diogo bus station
at the Darou N'Doye crossroads for the entire Diogo and Fass
Boye area



Reallocation of the entire health post in the Commune of Kaab
Gaye to benefit dozens of villages in the Department of Kébemer



100 **women entrepreneurs** supported by the Femmes
d'Avenir program through 2 bootcamps

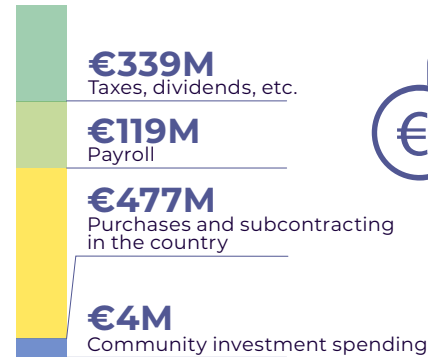


2023 CONTRIBUTIONS - GABON

Published in June 2024



Eramet operates in Gabon through its subsidiaries Comilog and Setrag. The local communities around Comilog's sites live mainly in the Lebombi-Leyou department (75,000 people) in the towns of Moanda, Mounana, Bakoumba and 10 surrounding villages (representing 70,000 people). SETRAG's neighboring communities are concentrated around the 7 main stations and 17 secondary stations in 5 Gabonese provinces, along the 648 km of railroad. The main localities near the stations are Owendo (80,000 people), Ntoum (10,000 people), Ndjolé (5,200 people), La Lopé, Booué, Lastourville (10,000 people), Moanda (64,000 people) and Franceville (112,000 people).



€939M
of economic
contribution
in Gabon in 2023

EMPLOYMENT

8,866 direct jobs*
in Gabon

98% of nationals

646 interns and students
hosted at Comilog

Around **80%** of hire
came from the local employment
area

6,500 indirect jobs**
in Gabon

* Direct jobs represent the workforce of subsidiaries and permanent on-site subcontractors

** Off-site jobs, in the country, linked to the supply chain



COMMUNITIES

€4M
of community investment

226,441 beneficiaries
of actions initiated by Comilog*** and
Setrag in basic infrastructure (water,
electricity, roads, health)



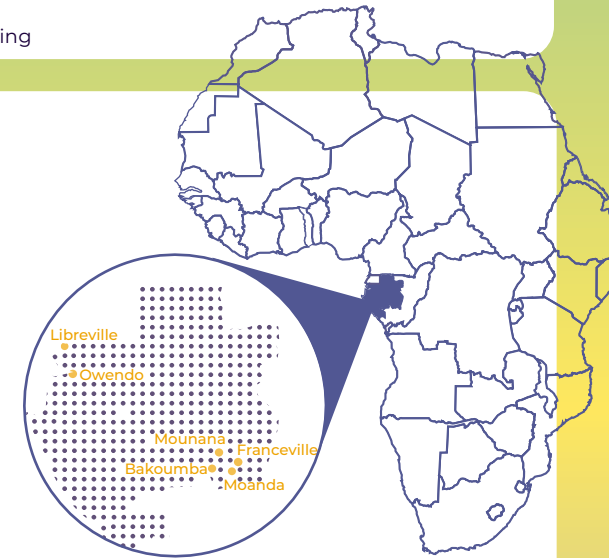
314 jobs supported through economic diversification programs:

80 women benefit from the Andem community market

208 jobs created through the Seed Fund

26 women supported by Femmes d'Avenir 2023

***Within the framework of the CSR Fund co-managed with the Gabonese government



2023 CONTRIBUTIONS - ARGENTINA

Published in June 2024



Eramet operates in Argentina through its subsidiary Eramine, which covers an area of 500 km² in La Puna in the province of Salta.

The salar is located in an immense desert region at an altitude of 3,800m. The area is inhabited by a dozen or so "Puesteros", who live mainly from pastoral activities. The lithium production plant is located 50 km from the village of Santa Rosa de los Pastos Grandes (population approx. 300), and the town of San Antonio de los Cobres (population approx. 6,000) is 100 km from the project.

€73M
Taxes, dividends, etc.

€10M
Payroll

€256M
Purchases and subcontracting
in the country

€300k
Community investment spending



€339M

of economic
contribution
in Argentina in 2023

EMPLOYMENT

2,517 direct jobs*
in Argentina

84% of nationals

17 interns and students
hosted at Eramine

Approximately **76%** of hires
came from the local employment area

900 indirect jobs**
in Argentina

* Direct jobs represent the workforce of subsidiaries and permanent on-site subcontractors during the plant construction phase.

** Off-site jobs, in the country, linked to the supply chain during the plant construction phase.



COMMUNITIES

€300k
of community investment

1,170 beneficiaries
of community investment

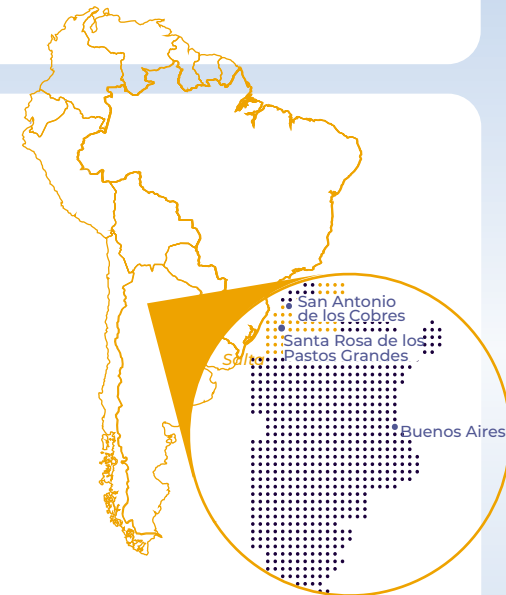


160 women beneficiaries
of the Triple Impact project, which aims to support
the development of an entrepreneurial ecosystem
along 3 axes:

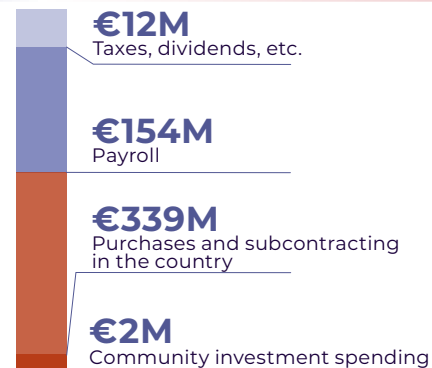
Education through schools and universities

Awareness-raising and support to entrepreneurship

Job creation in the sectors chosen by candidates



Eramet is present in New Caledonia through its subsidiary SLN. It operates in 11 towns, 5 customary areas, 17 customary districts and 91 tribes. There are more than 180,000 inhabitants in Greater Nouméa (80% of the population), and 45,000 inhabitants in the towns where it operates: Koumac (3,981 people), Poum (1,435 people), Kaala Gomen (1,803 people), Kouaoua (1,304 people), Houailou (3,955 people), Thio (2,524 people), Poya (2,802 people), Pouembout (2,752 people), Boulouparis (3,315 people) and in Nouméa (94,225 people).



€507M
of economic contribution in New Caledonia in 2023



EMPLOYMENT

3,330 direct jobs* in New Caledonia

301 interns and students hosted by subsidiaries

Approximately **95%** of hires came from the local employment area

6,000 indirect jobs** in New Caledonia

* Direct jobs represent the workforce of subsidiaries and permanent on-site subcontractors

** Off-site jobs, in the country, linked to the supply chain



COMMUNITIES

€2M

of community investment



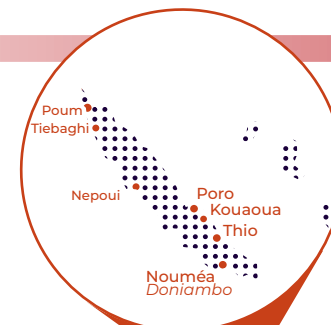
Around **1,500** inhabitants benefit from a drinking water supply in the towns of Thio, Poum and Wénin (town of Kouaoua)



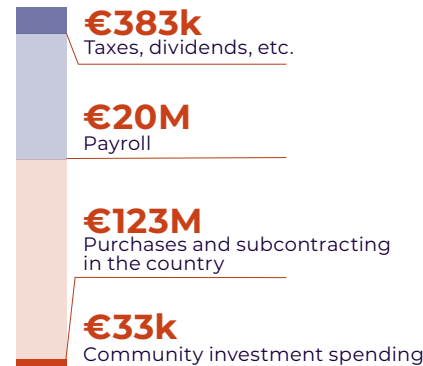
Around **2,500** inhabitants from Houailou benefiting from youth projects in education and sport



Technical Support for a tribe in Thio for a reforestation program following forest fires



Eramet Marietta is located on the border between Ohio and West Virginia. It is in the Washington County (60,000 inhabitants), and neighbors Wood County in West Virginia (80,000 inhabitants). The area has a strong industrial history, associated with the key role of the Ohio river as a transportation route. The city of Marietta hosts several colleges (Marietta College, Washington State Community College), and a general hospital.



€143M
of economic contribution in the United States in 2023



EMPLOYMENT

198 direct jobs* in the United States

98% of nationals

4 interns and students hosted at Eramet Marietta

96% of hires came from the local employment area

* Direct jobs represent the workforce of subsidiaries and permanent on-site subcontractors



COMMUNITIES

€33k of community investment



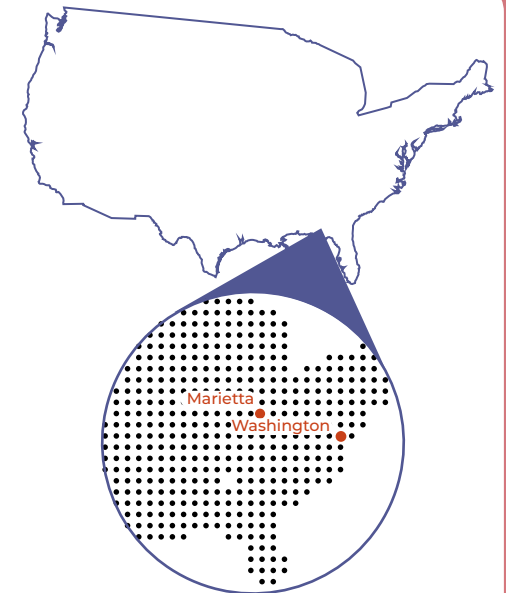
70 beneficiaries of actions initiated by Eramet Marietta



More than **60** people with reduced mobility received help for getting access to the medical care they need



4 scholarships awarded to local students at Marietta and local universities

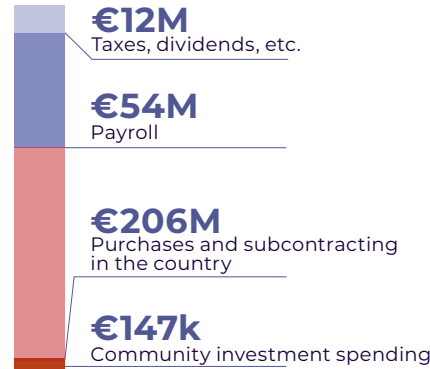


2023 CONTRIBUTIONS - NORWAY

Published in June 2024



In Norway, Eramet operates 3 plants: Porsgrunn (36,400 inhabitants), Sauda (4,600 inhabitants) and Kvinesdal (6,000 inhabitants).



 **€271**
of economic contribution
in Norway in 2023

EMPLOYMENT

737 direct jobs*
in Norway

96% of nationals

61 interns and students
hosted by subsidiaries

Around **100%** of hires came
from the local employment area

1,120 indirect jobs**
in Norway

* Direct jobs represent the workforce of subsidiaries and permanent on-site subcontractors.

** Off-site jobs, in the country, linked to the supply chain



COMMUNITIES

€147k
of community investment



10,000 beneficiaries of shares
initiated by Eramet Norway



Commitment to creating a **regional science center** in Kvinesdal



Support for local sports clubs in Porsgrunn, Sauda and Kvinesdal to promote the physical and mental health of young people



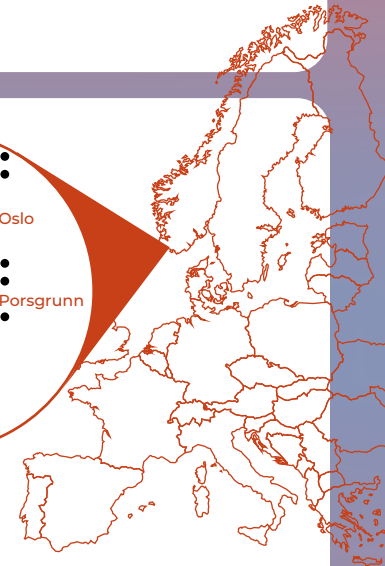
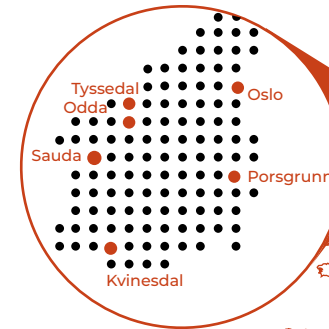
Participation in **local industry associations** in all host municipalities to support business development and job creation



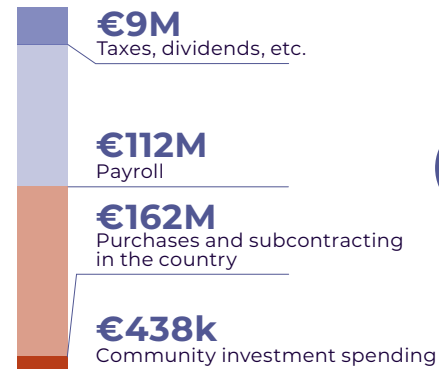
Participation in **local cultural events**: annual theater festival in Porsgrunn, solidarity concert in Kvinesdal



Collaboration with local and national **environmental organizations** to raise awareness and knowledge of our industry



Eramet has four sites in metropolitan France: Comilog Dunkerque, Eramet Ideas and its research center in Trappes, Eramet Services in Clermont Ferrand and the Group's headquarters in Paris.



€283M
of economic contribution in France in 2023

EMPLOYMENT

902 direct jobs* in France

23% of nationals

72 interns and students hosted by subsidiaries

Around **80%** of hires came from the local employment area

24 indirect jobs** in France

* Direct jobs represent the workforce of subsidiaries and permanent on-site subcontractors.

** Off-site jobs, in the country, linked to the supply chain



COMMUNITIES

€438k

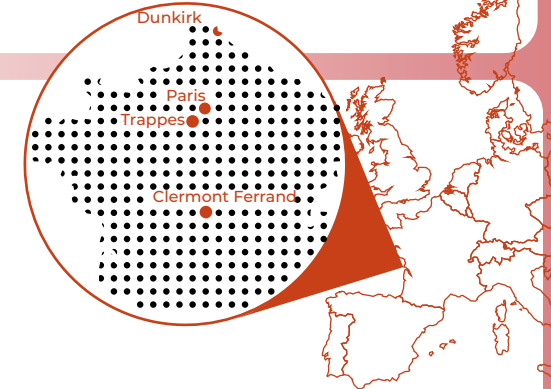
of community investment including:

€433k sponsorship by Eramet SA as part of the Eramet Beyond For Contributive Impacts Program

Supporting local economic diversification in Gabon, Senegal and Cameroon



Support for education in Gabon



Eramet's exploration project in Cameroon is located in a rural area in the Central and Southern regions. More than 3,600 people live in the villages in the immediate vicinity of the exploration sites. The nearest towns are Akonolinga and Sangmélima.

€400k
Taxes, dividends, etc.

€600k
Payroll

€4M
Purchases and subcontracting in the country

€23k
Community investment spending



€5M
of economic contribution in Cameroon in 2023



EMPLOYMENT

40 direct jobs* in Cameroon

26 interns and students

* Direct jobs represent the workforce of subsidiaries and permanent on-site subcontractors.



COMMUNITIES

€23k

of community investment



1,410 beneficiaries of actions initiated by Eramet Cameroun



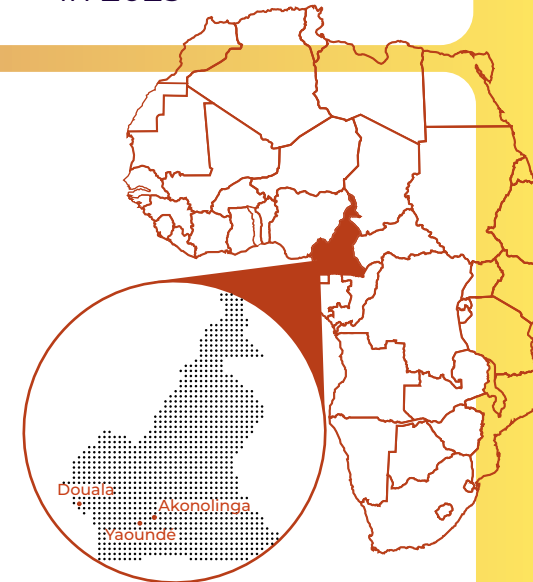
600 villagers now have access to water thanks to the rehabilitation of the drinking water supply infrastructure at the Kane borehole and the Ngoubou spring.



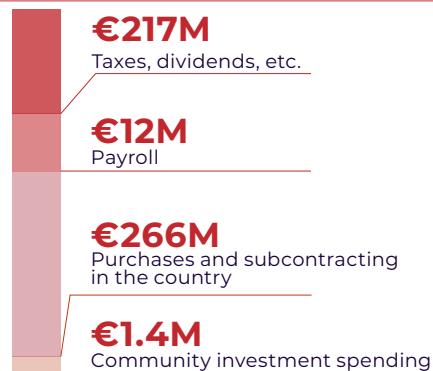
610 pupils benefit from improved access to education



300 women benefit from awareness-raising sessions on entrepreneurship and gender-based violence



The Weda Bay Nickel operations are located in two regencies (Central Halmahera and East Halmahera) on the Halmahera Island, in the Indonesian province of North Maluku. The 6 closest villages are Lelilef Sawai and Lelilef Waibulan, Gemaf, Woejerana, Woekob and Kulo Jaya, with an overall population of approximately 70,000 people. Few groups of semi nomadic people, called Forest Tobelo, also live in the interior forests of Halmahera island



€496M
of economic contribution in Indonesia in 2023

EMPLOYMENT

14,000 direct jobs**

in PT Weda Bay Nickel

including **1,503** employees of PT Weda Bay Nickel

11,120 indirect jobs*** in Indonesia

* Financial data are given in proportion to Eramet's indirect interest in PT Weda Bay Nickel (38.7%)

** Direct jobs represent the workforce of subsidiaries and permanent on-site subcontractors.

*** Off-site jobs, in the country, linked to the supply chain



COMMUNITIES

€1,431k

of community investment including:



25,000 residents benefit

from new infrastructures, including :

5 km of water networks in the village of Kulo Jaya

2 km of village roads in Lelief Sawai



3 ambulances financed, benefiting around

20,000 people



16 student scholarships awarded by Weda Bay Nickel in 2023

